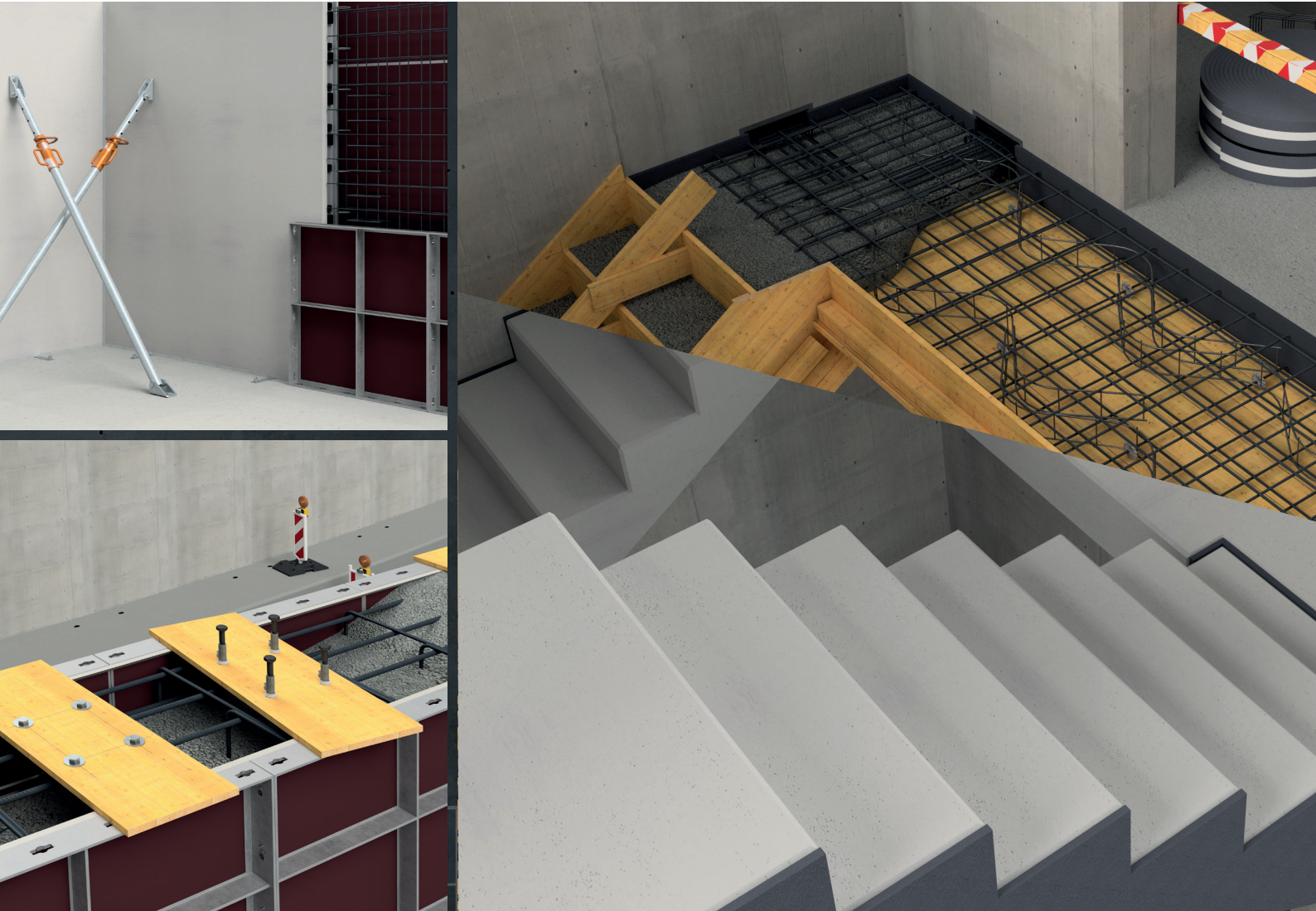


BUILDING SOLUTIONS



PORTFOLIO

PRODUCTS AND SERVICES

HYDRAULIC COMPONENTS & POWER UNITS PRODUCTION CYLINDER PRODUCTION



- » Cylinder construction
- » Power units production
- » Hydraulic components
- » Connecting systems
- » Fluidmanagement

BUILDING SOLUTIONS



- » Transport
- » Connection
- » Facades
- » Fixation
- » Bearing systems with noise reduction
- » Earthing

LIFTING, ATTACHMENT AND LASHING TECHNOLOGY



- » Lifting devices
- » Lifting equipment
- » Wire ropes and accessories
- » Attachment points
- » Lashing equipment
- » PPE



SERVICES

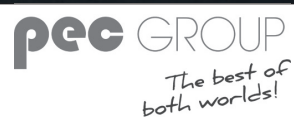


- » Testing and repair service in accordance to Accident Prevention Regulations
- » Hydraulic services and installation
- » Planning and design
- » Customer support
- » PHILIPPACADEMY
- » myPHILIPP App

CONTENT

» INTRODUCTION	4
» TRANSPORT	6
» CONNECTION	8
» FACADE	10
» FIXATION	12
» BEARING SYSTEMS WITH NOISE REDUCTION	14
» EARTHING/GROUNDING	16
» SERVICES	18

OUR PARTNERS FOR BUILDING SOLUTIONS



Dear business partners and friends of the company,

as the CEO of the **PHILIPPGROUP**, I am proud to be a part of our company's history and family. For over 50 years, our company has continuously evolved and is now a major player in the market for innovative and high quality products and services.

With over 300 employees at three locations in Germany and more than 30 international cooperation partners worldwide, we are one of the leading manufacturers and suppliers of products in the fields of building solutions, hydraulic components, rope and lifting technology aggregate construction and also cylinder construction. Numerous patents and industrial property rights reflect our innovative strength and technical know-how. Our customers appreciate not only the quality of our products, but also our excellent customer service and fast delivery.

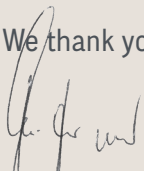
Throughout the years, we have always focused on understanding our customers' needs and developing innovative solutions to meet their needs.

We are pleased that our commitment is now also underlined by the DIN EN ISO 9001 certification. We are proud of our certifications and are continuously improving.

Our goals are clearly defined:

We also remain true to our commitment to sustainability and environmental protection and are constantly looking for ways to minimize our environmental footprint.

We thank you for your interest and confidence.



Thorsten Philipp and his team



» FROM PLANNING AND CONSTRUCTION TO AFTER-SALES-SERVICE

The **PHILIPPGROUP** is a leading provider of comprehensive solutions for your building projects. We have a wide range of products and offer an all-round carefree package from problem analysis to consulting and on-site service and ensure the right solution for every application - from planning and construction to after-sales service. Our experience and know-how in the areas of in-situ and also precast concrete elements enables us to offer our customers high-quality products and services tailored to their specific requirements.

Our services include a problem analysis to understand specific requirements of each customer and to develop individual solutions. We ensure that the best possible installation parts are selected at the design stage to meet the highest quality standards. We advise our prospects on the best products and solutions to ensure that their requirements are met and their projects are always successful.

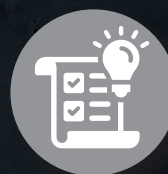
We as **PHILIPPGROUP** stand for customized solutions for all requirements as well as continuous improvement of our existing products. We also conduct trials to ensure that our products meet the highest standards and fulfil all requirements. We are proud to offer fast and reliable delivery so that your projects can continue and be finalized as planned. We also offer fast and efficient support with our on-site service. As a partner, we support them through every step of their building project - from the initial idea to completion and beyond.



**PROBLEM
ANALYSIS**



CONSULTING



DEVELOPMENT



DESIGN



TEST EXECUTION



DELIVERY

Our expert team of technicians and experienced sales staff can be reached by phone, e-mail, videoconference and also via our sales representatives.

TEAM BUILDING SOLUTIONS

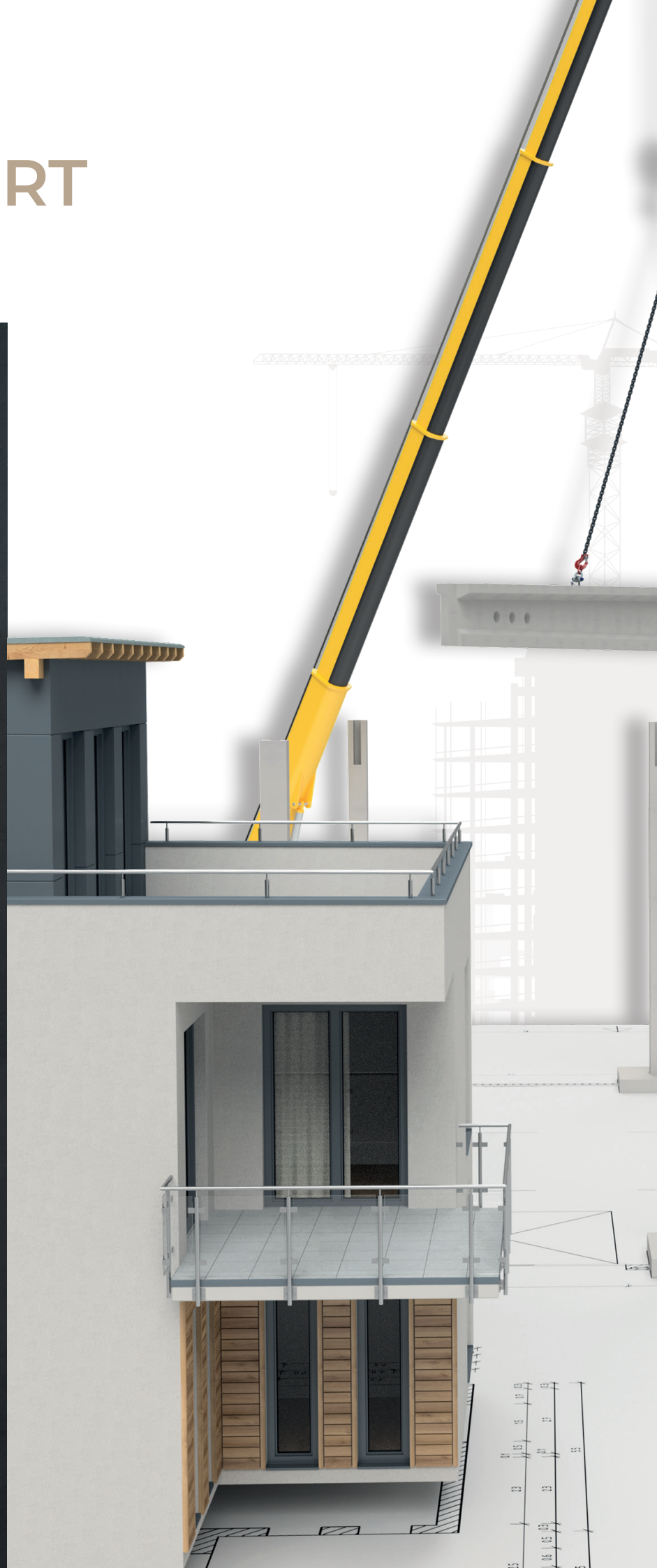
+49 6021 4027-300
tum@philipp-gruppe.de

» TRANSPORT

The **PHILIPP**GROUP's lifting anchors face "heavy" challenges every day in the transport and assembly of precast concrete elements. The safety of people in the precast plant and on the construction site - as well as during use is particularly close to our hearts. With high-quality and precisely manufactured lifting anchors the **PHILIPP**GROUP proves, that quality creates trust and thus safety. Continuous quality assurance measures additionally strengthen this trust.

The production of lifting anchor systems is regulated by European-wide regulations, on the one hand the so-called Machinery Directive and on the other hand DIN EN 13155. On the basis of these directives, the transport anchor systems are CE marked continuously.

In addition to lifting anchor systems, the **PHILIPP**GROUP also offers complementary products from the field of lifting, attachment and lashing technology, such as load suspension and slinging equipment for a wide range of requirements. The **PHILIPP**GROUP offers complete systems from a single source, from crane hooks to lifting anchors, and thus stands for all-round solutions for all requirements in the field of precast concrete parts.



“

TRANSPORT AND ASSEMBLY - SECURED



» CONNECTION

Modern skeleton constructions require variable connections in different styles. Our solutions are focused on connections for walls to each other and to columns mainly.

Most of this connections can be realised with our range of boxes and rails, which generate a form and force fit connection in the joint. These are secured by high-strength mortar in the joints. Overall, the flexibility of wire rope loop systems greatly simplifies the installation of concrete elements, regardless of whether precast elements or in-situ concrete structures are used.

Solutions for simple, constructive connections, i.e. without transferring static loads, are also available by means of various product types.

**DESIGN SOFTWARE
FOR WIRE ROPE LOOP
CONNECTIONS
(PHILIPP POWER SERIES)**

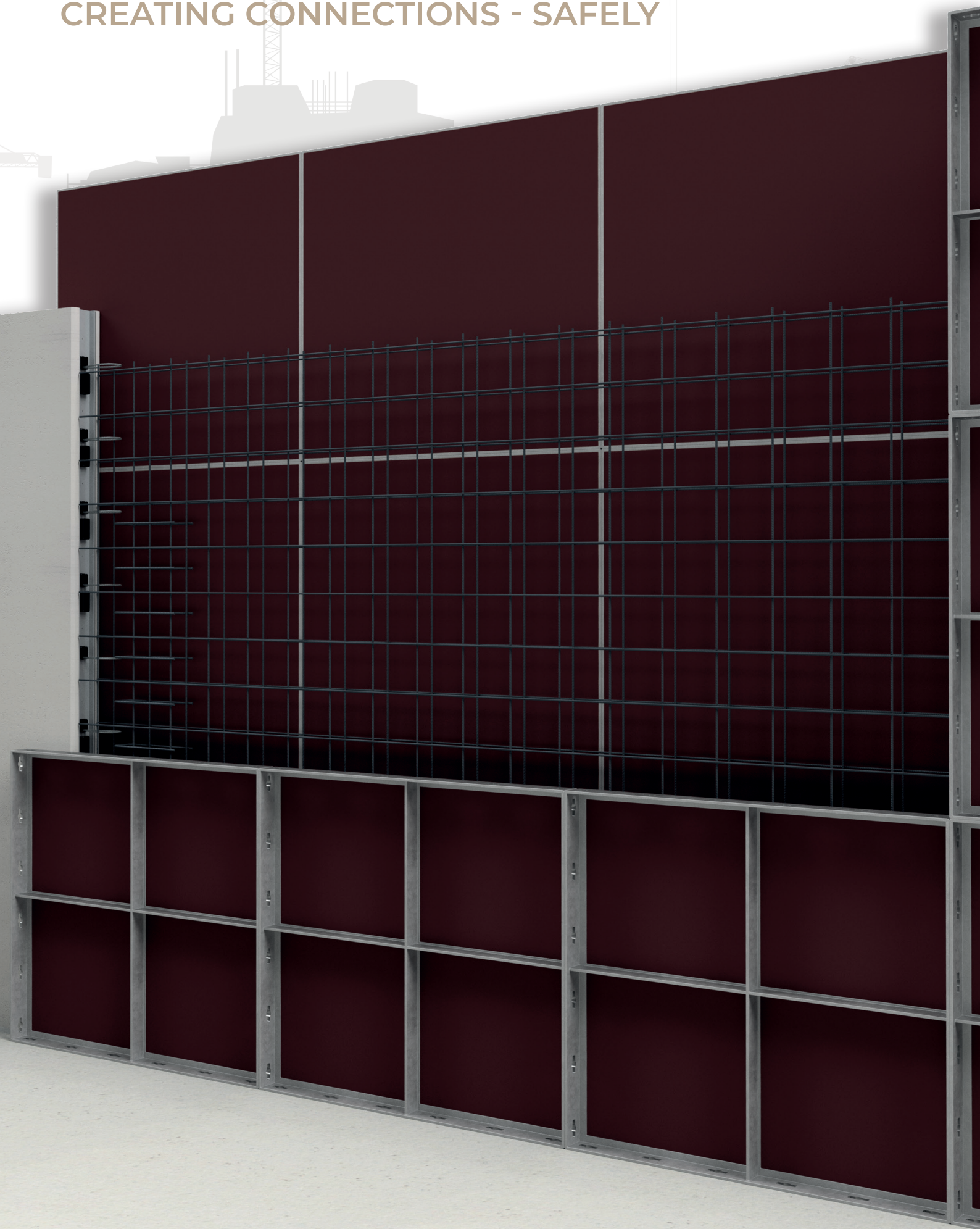


With just a few entries our online calculation allows you to design precast connections with the approved products of the Power series (One, Duo, OS and Box).



“

CREATING CONNECTIONS - SAFELY



» FACADE

The facade is the figurehead of many prefabricated buildings and thus has a decisive influence on their charm. Prefabricated elements in sandwich construction, which consist of a load-bearing layer, a visible facing layer and a thermal insulation layer in between, are often used for an economical design.

Corrosion-free anchorings connect the non-structural facing layer to the load-bearing layer and form an anchor system that transfers vertical and horizontal forces into the load-bearing layer.

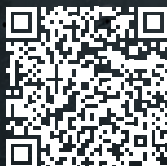
Proven systems are available for connecting the two layers. Those systems meet the highest technical requirements and are therefore approved by German administrations.

DESIGN SOFTWARE FOR PHILIPP SANDWICH PANEL ANCHOR SYSTEMS TYPE SPA/SA/FA

PHILIPPGRUPPE



Our software supports you in the design and selection of type SPA and type SA/FA connectors, i.e. Sleeve and Flat Anchors, for reinforced concrete sandwich elements. The easy-to-understand software allows a quick design of sandwich anchors for panels up to 40 cm insulation layer with only a few parameters such as geometry, layer data and bearing system. In addition to easy handling and design, the program also offers a simple structure, clear verifications and an interface to the CAD system Strakon.



“

**IMPRESSIVE FACADES NEED
LOAD-BEARING CONNECTORS!**



» FIXATION

Fixing solutions are of existential importance for building solutions. Because very often elements have to be fixed directly to concrete elements and this has to be done very fast and simple to reduce mounting costs. Predefined fixing points with high load-bearing capacities provide ideal conditions for a fast mounting compared to subsequent solutions with drilling and dowelling.

Independent of precast or in-situ concrete constructions, profiles or individual anchorages in various shapes cover a wide range of applications for fixations in concrete.

DESIGN SOFTWARE
PHILIPP PB ANCHOR

PHILIPPGRUPPE

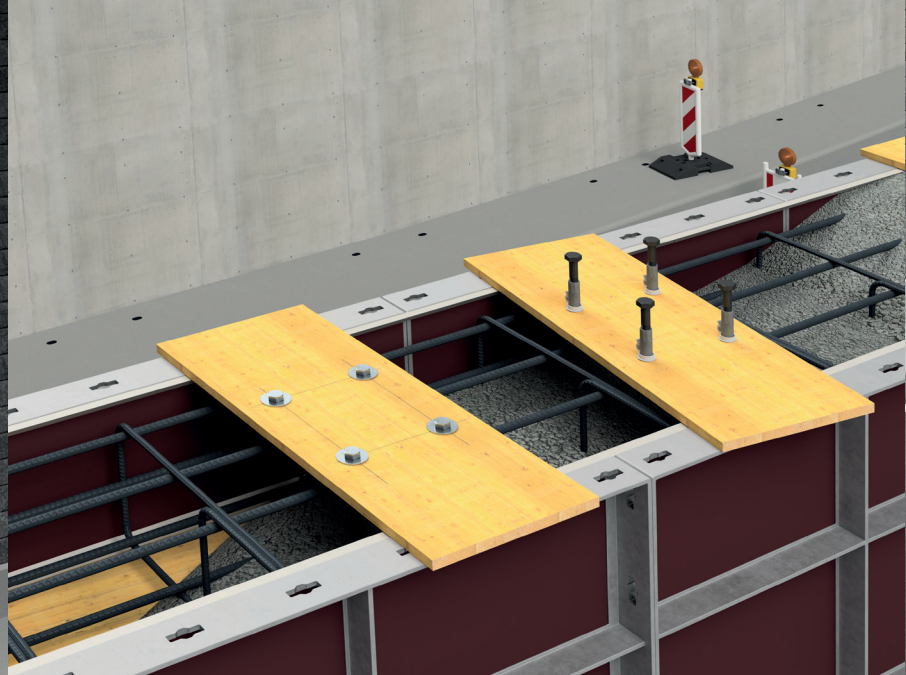
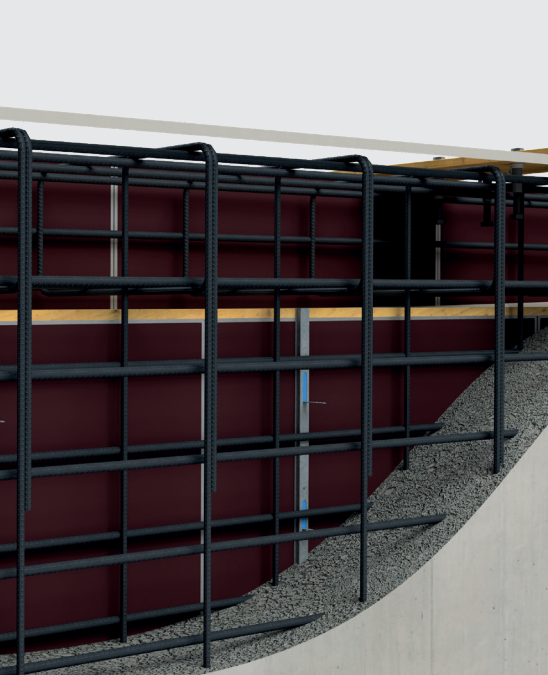
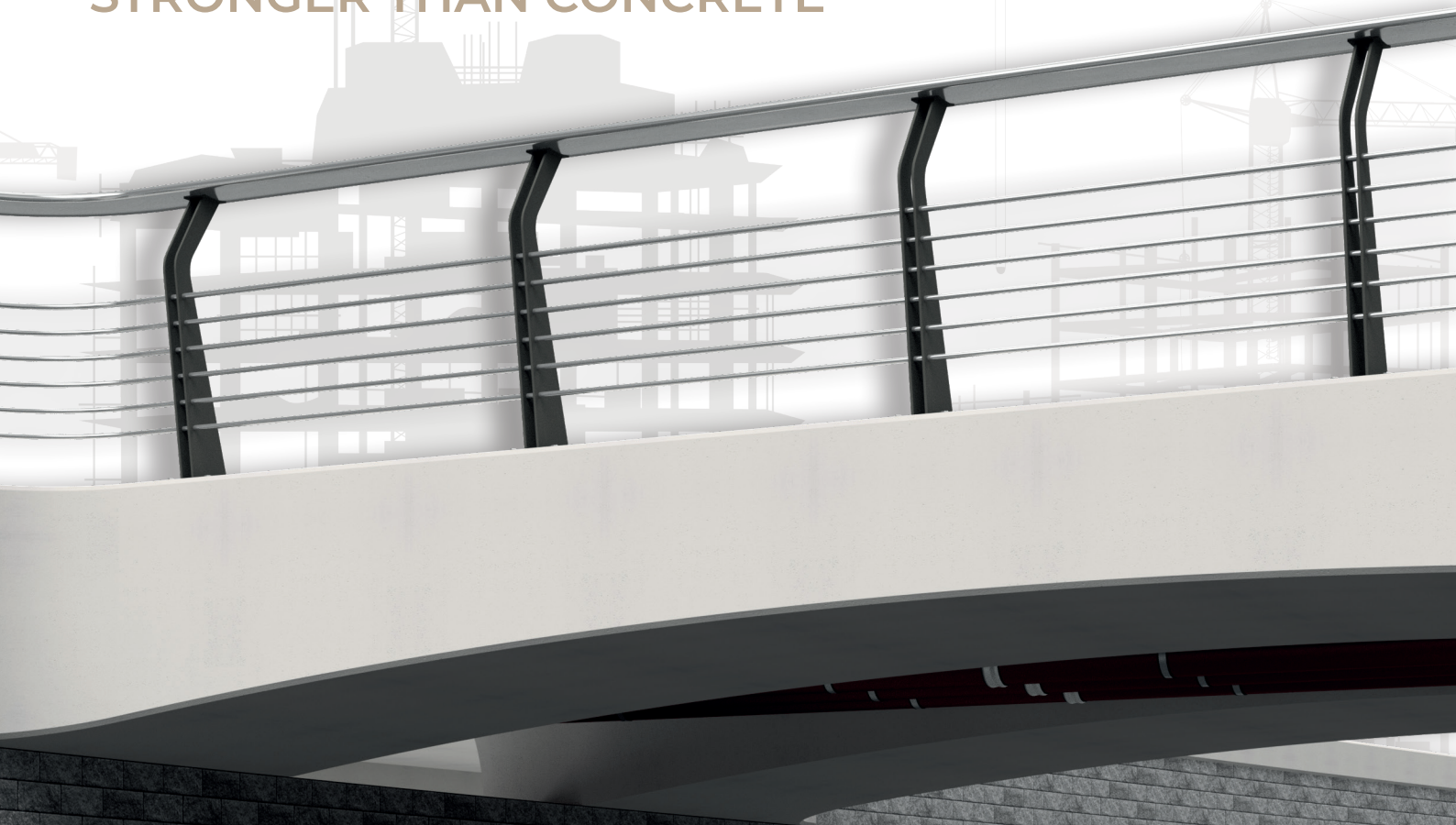


Permanent fixings in concrete using simple anchor bolts with internally threaded insert that transfer tensile and shear loads as well as combinations can be designed easily and quickly with this software based on the current Eurocode 2, part 4.



“

FIXING PARTS WITH OUR PROMISE: STRONGER THAN CONCRETE



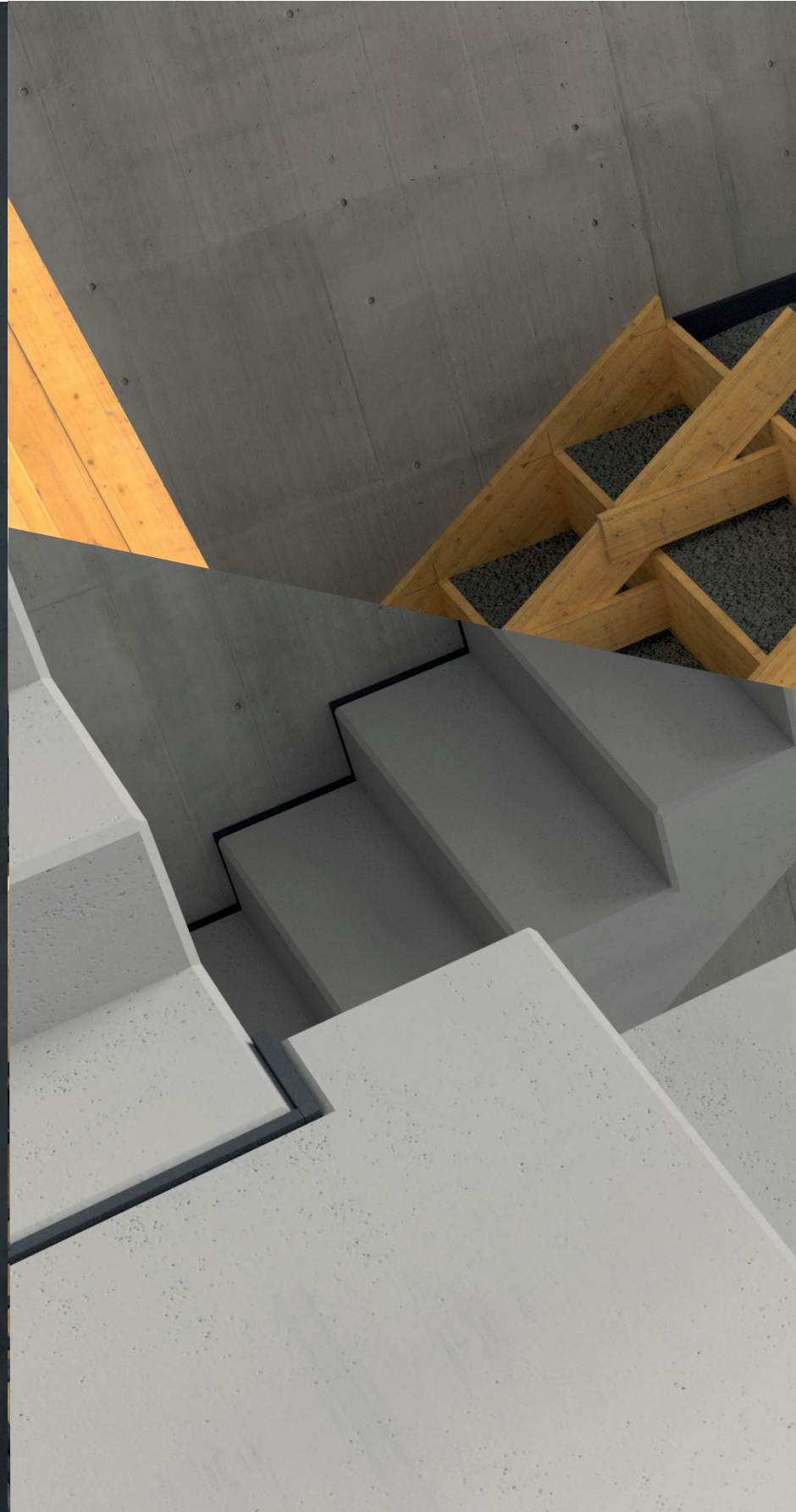
» BEARING SYSTEMS WITH NOISE REDUCTION

Building physics requirements are becoming increasingly important in both precast and in-situ concrete structures. The focus is of course on health protection and increased comfort requirements.

Sound insulation in particular plays a crucial role in reducing unpleasant noise nuisance. Beside airborne sound - protected e.g. by sound barrier walls - the impact sound is an important issue to be respected in the building physics of a new building.

In order to reduce impact sound transmission from staircases to neighbouring walls or floor slabs, stair flights and landings have to be decoupled acoustically. Suitable decoupling elements can be used in these situations, regardless of whether precast reinforced or in-situ concrete elements are involved. The secret of sound insulation lies in an entire system in which elastomeric bearings play an important role.

The **PHILIPPGROUP** offers approved and type-tested products that have passed building acoustics tests in accordance with DIN 7396 and complies with the impact sound insulation requirements of DIN 4109. An expert opinion is also available on the fire behavior of various products.



“

HAVE YOU HEARD ANYTHING?



» EARTHING

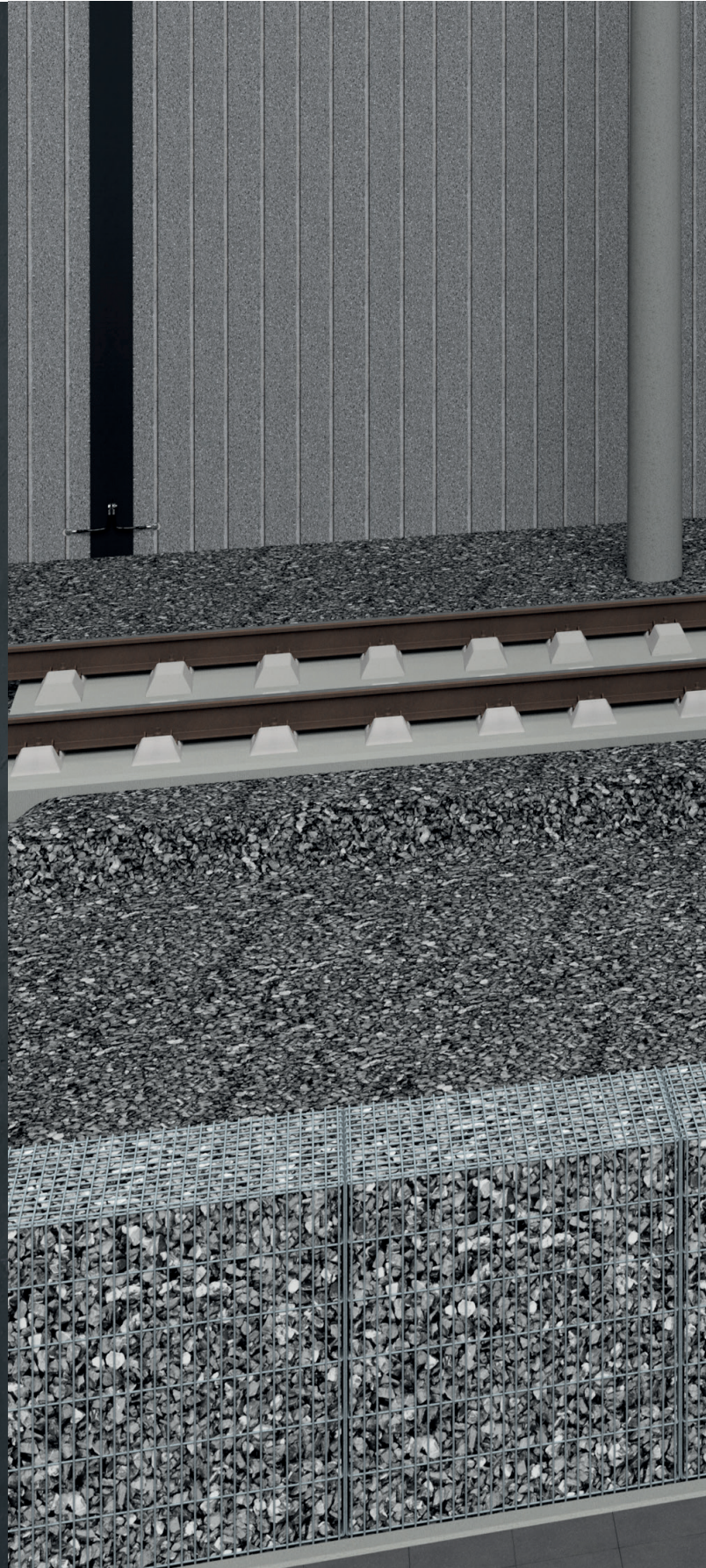
Earthing technology is always needed, when a defined reference potential or potential equalization has to be provided. Therefore, in principle, all necessary measures are taken to connect an electrical part to earth.

Railroad earthing

The railroad is one of the oldest and proven means of passenger and freight transportation. The permanent further development of railroad drive and control technology from mechanical to electrical systems has led to a significant increase in the demands placed on the earthing of railroad systems. Therefore certified, tested and approved products of **PHILIPP**-Railroad Earthing Technology are used.

The task of earthing sleeves and connectors is to protect conductive structures – such as platforms, retaining walls, tunnels, stations, etc. – from damage, tunnel components, stations, steel and concrete poles – to be electrically connected to the railroad line or track. The planner, supported by the consulting assistance of the **PHILIPP**GROUP, can safely select products that ensure proper protection of persons and equipment in the vicinity of the track systems.

The various versions of **PHILIPP** earthing sleeves were tested in accordance with "DB Guideline 997 02 Overhead line systems, return current routing, railroad grounding and equipotential bonding", approved by the Federal Railway Authority and included in the Deutsche Bahn's list of drawings under "3 Ebs 15.03.19 – 1" ff. The available **PHILIPP** earthing connectors are manufactured and supplied under the current requirements of the DB drawing regulations "4 Ebs 15.03.17 – 1" ff. We will be happy to advise you!



“

WIDE RANGE OF EARTHING TECHNOLOGY



» SERVICES

TECHNICAL DEPARTMENT

Nowadays, customers rightly expect more from a parts supplier for the precast concrete industry than just the reliable supply of high-quality installation parts at favorable prices. On the contrary, a wide variety of services related to the products complement the range and provide customers with real added value. Even supposedly simple installation parts, such as lifting anchors, require explanations both on the planning side (design, selection) as well as on the user side (installation and assembly). Our company attaches great importance to support and advice around our product portfolio. Therefore, the technical department is available for individual inquiries at any time and will work out customized solutions together with you - especially in the field of lifting anchors.

SPECIAL VERSIONS

The **PHILIPPGROUP** offers special designs tailored to the needs of our customers. Each special design is developed individually and according to the specific requirements of the application. Highest precision and quality ensure that the expectations of our prospective customers are fully met.

PRACTICAL TRIALS ON SITE

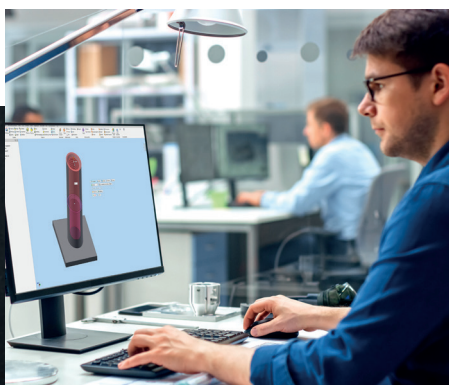
We attach great importance to practical trials on site in the construction industry, in order to achieve the best possible results. This involves testing and optimizing the customer's concepts in a real environment in order to find the best possible solution. The experts of the **PHILIPPGROUP** contribute their expertise and, of course, their experience to all trials. We ensure that your requirements are precisely covered in our design.

PLANNING ASSISTANCE

A wide range of options are available from the **PHILIPPGROUP** as planning aids:

- » Detailed Installation and Application Instructions
- » Stairs and their transport
- » CAD data
- » and much more

All digital aids are available to you as support at any time at www.philipp-gruppe.de.



You want to see all our planning assistancies at a glance? Simply scan:



TEAM BUILDING SOLUTIONS

+49 6021 4027-300
 @ tum@philipp-gruppe.de



TRAININGS

With detailed training content and information materials, we are constantly expanding the knowledge and skills of your employees in planning and production. The comprehensive training courses of **PHILIPPAKADÉMIE** are conducted by our experts on-site at the customer's premises, online or via webinars. Find out about our current offer.



Find all our current dates:


PHILIPPAKADÉMIE



GERMAN APPROVAL

We at **PHILIPPGROUP** attach great importance to ensure that your projects comply with the applicable standards and regulations. We often work closely with recognized testing institutes to ensure that the solutions we offer meet the high standards required. In this context, type tests or approvals create the highest level of confidence that you can rely on the quality and safety of the products without restriction.



PHIADUKT

With our Internet-service portal "**PHi**adukt", we have built a digital bridge between suppliers and end customers. Ordering online and being able to check the status of orders in detail at any time has long been part of everyday life in the private shopping sector, so why not in the B2B sector as well? An early warning system for possible delivery bottlenecks of certain products can save production disruptions and avoidable delays.



Still no access? **REGISTER NOW**


PHiadukt



Our customers trust us to deliver.
We do everything in our power to reward their faith and we start each day intending to do better than the last.
We provide strength and stability in an ever-changing world.

Welcome to the PHILIPP Group



PHILIPP GmbH
Lilienthalstraße 7-9
63741 Aschaffenburg
☎ + 49 6021 40 27-0
✉ info@philipp-gruppe.de

PHILIPP GmbH
Roßlauer Straße 70
06869 Coswig/Anhalt
☎ + 49 34903 6 94-0
✉ info@philipp-gruppe.de

PHILIPP GmbH
Sperberweg 37
41468 Neuss
☎ + 49 2131 3 59 18-0
✉ info@philipp-gruppe.de

PHILIPP ACON Hydraulik GmbH
Hinter dem grünen Jäger 3
38836 Dardesheim
☎ + 49 39422 95 68-0
✉ info@philipp-gruppe.de



PHILIPP Vertriebs GmbH
Leogangerstraße 21
5760 Saalfelden / Salzburg
☎ + 43 6582 7 04 01
✉ info@philipp-gruppe.at



Visit us!

www.philipp-group.de